

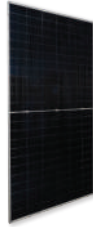
## Best In Class Bifacial Modules 4.7 GW capacity

**TP540HG10B**



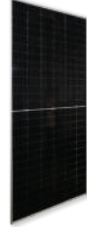
**Glass - Glass**  
182 mm, Half - Cut  
144 Nos, 530W - 550W  
(2278 x 1134) mm

**TP540HG10TB**



**Glass - Transparent Backsheet**  
182 mm, Half - Cut  
144 Nos, 530W - 550W  
(2278 x 1134) mm

**TP600LG10TB**



**Glass - Transparent Backsheet**  
182 mm, Half - Cut  
156 Nos, 570W - 600W  
(2456 x 1134) mm

**TP600LG10B**



**Glass - Glass**  
182 mm, Half - Cut  
156 Nos, 570W - 600W  
(2456 x 1134) mm

With over three decades of state-of-the-art manufacturing expertise, Tata Power Solar shines as a trailblazing global solar manufacturer with an unwavering commitment towards fostering robust supply chain practices.

# Illuminating *A Sustainable Future*



**Trust**



**Reliability**



**Longevity**



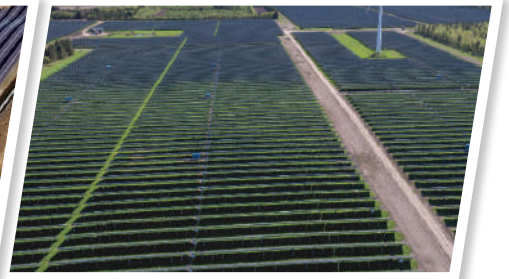
**Embracing Diversity and Inclusivity**

80% women operators in the manufacturing plant

**Across  
Global Horizons**

2.8MWp, Ballston, Oregon, USA

59MWp, Nees, Denmark

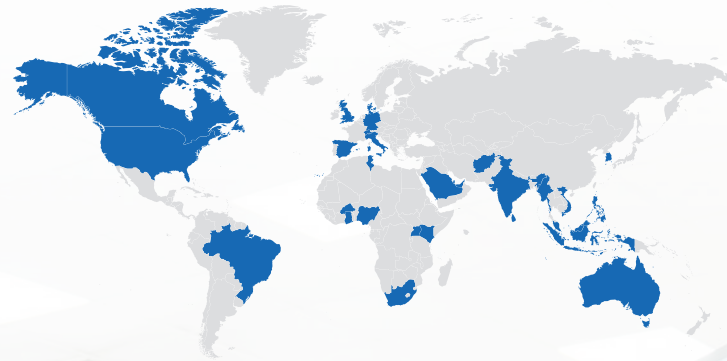


3.2MWp, Labish, Oregon, USA

3.8MWp, Herzogenrath, Germany

5MWp, Lagness, Chichester, UK

**3 GW  
Modules Installed**



**Aalingana: Embracing Sustainability**

Aalingana, 'embrace' in Sanskrit, embodies over 150 years of the Tata group's vision for a greener, cleaner, more sustainable and equitable future for the planet.



Touched over **55 million** lives



Carbon offset by **30 million** tons



Zero liquid discharge plant with **70 acres** of green space



**International certifications –**  
ISO 9001, ISO 14001 & ISO 45001  
IEC 61215, 61730, 61701, 62716, 60068, UL61730

